

Rev05
Update: Apr,25,2023

DATASHEET

MonoRab™ Rabbit Anti-Camelid VHH Antibody, mAb

Cat. No.: A01860

Overview

Specificity	GenScript MonoRab™ Rabbit Anti-Camelid VHH Antibody, mAb is specific for Camelid sdAb (Alpaca, Llama and Camel). The monoclonal antibody has no cross-reactivity with mouse, rat, rabbit, chicken, goat or human immunoglobulins.
Host Species	Rabbit
Immunogen	Llama sdAb
Species Reactivity	Alpaca, Llama and Camel
Conjugate	Unconjugated

Applications

Working concentrations for specific applications should be determined by the investigators. The appropriate concentrations may be affected by primary/secondary antibody affinity, antigen concentration, the sensitivity of the method of detection, temperature, the length of the incubations, and other factors. The suitability of this antibody for applications other than those listed below has not been determined. The following concentration ranges are recommended starting points for this product. Optimal working dilutions must be determined by the end user.

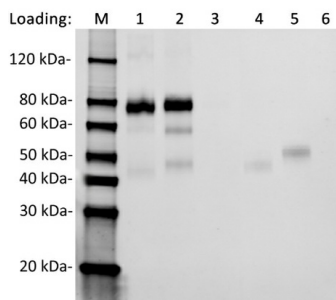
Application	Recommended Usage
Western Blot	1:1,000-1:5,000
ELISA	1:5,000-1:10,000
Sandwich ELISA	A01860 (C)-A02014 (D)

Properties

Form	Liquid
Storage Buffer	supplied in PBS (pH 7.4), 0.02% sodium azide and 50% glycerol.
Concentration	0.5 mg/mL

Storage Instructions	Store at -20°C. This product is stable for 1 year upon receipt, when handled and stored as instructed
Purification	Protein A affinity column
Isotype	Rabbit IgG
Clonality	Monoclonal
Clone ID	96A3F5

Examples



Lane 1: Non-reduced Camel IgG2 50ng
 Lane 2: Non-reduced Camel IgG3 50ng
 Lane 3: Non-reduced Camel IgG1 50ng
 Lane 4: Reduced Camel IgG2 50ng
 Lane 5: Reduced Camel IgG3 50ng
 Lane 6: Reduced Camel IgG1 50ng

Primary antibody:
 MonoRab™ Rabbit Anti-Camelid VHH Antibody, mAb (GenScript, A01860-200, 0.5 µg/ml)
 Secondary antibody:
 Goat Anti-Rabbit IgG [H&L] [HRP] Polyclonal Antibody (GenScript, A00098, 1:5,000)

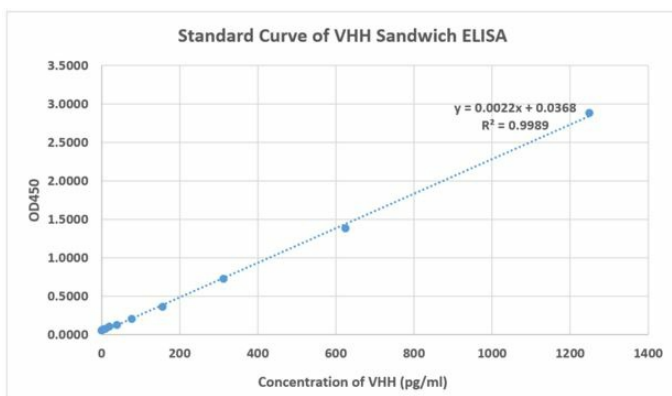
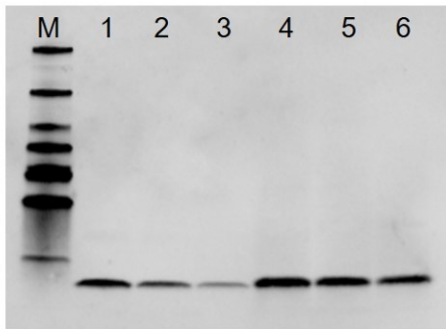


Figure 6. Standard curve for quantitative detection of VHH by sandwich ELISA. The VHH Sandwich ELISA assay is developed by using MonoRab™ Rabbit Anti-Camelid VHH Antibody, mAb (GenScript, A01860) and MonoRab™ Rabbit Anti-Camelid VHH Cocktail [HRP] (GenScript, A02016) as the capture and detection antibodies, respectively. In this ELISA assay, the detection antibody was labeled with horseradish peroxidase (HRP). However, if an unconjugated detection antibody is desired, MonoRab™ Rabbit Anti-Camelid VHH Cocktail (A02014) can be used for this assay.

Note: GenScript can provide customized conjugation services for this product as per customer's request.

Western Blot of A01860 with VHHs



VHH #1 (ng):	100	50	25	-	-	-
VHH #2 (ng):	-	-	-	100	50	25

Lane 1: VHH #1 100 ng
 Lane 2: VHH #1 50 ng
 Lane 3: VHH #1 25 ng
 Lane 4: VHH #2 100 ng
 Lane 5: VHH #2 50 ng
 Lane 6: VHH #2 25 ng

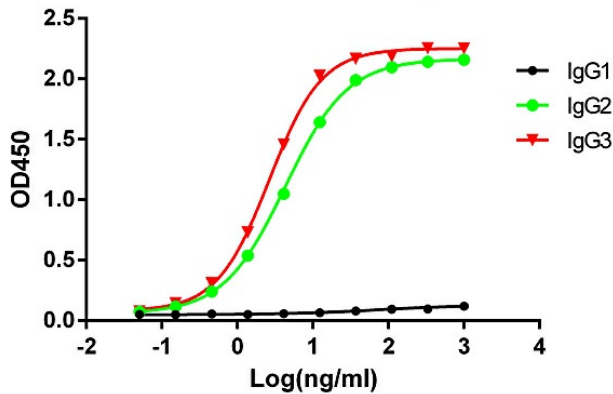
Primary antibody:

MonoRab™ Rabbit Anti-Camelid VHH Antibody, mAb
 (Genscript, A01860, 0.5µg/ml)

Secondary antibody:

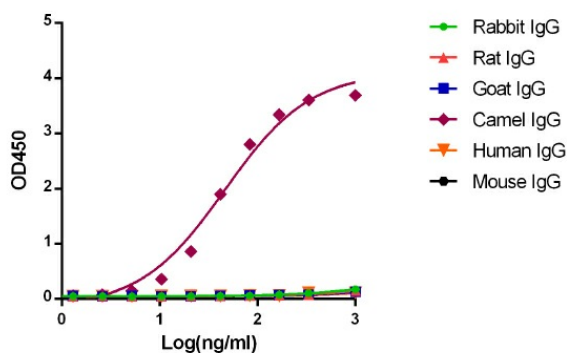
Goat Anti-Rabbit IgG Antibody (H&L) [HRP], pAb (Genscript, A00098, 1:5,000)

ELISA binding of A01860 with different subclasses camelid IgG



MonoRab™ Rabbit Anti-Camelid VHH Antibody, mAb (A01860) is specific to camelid heavy chain antibodies (IgG2&3), but not to the camelid conventional antibody (IgG1).

Cross reactivity of A01860 with IgG of different species



MonoRab™ Rabbit Anti-Camelid VHH Antibody, mAb (A01860) is specific to Camelid IgG and has no cross-reactivity with mouse, rat, rabbit, goat and human immunoglobulins.

Background

Target Background : A Camelid VHH Antibody (also called single-domain antibody, sdAb or Nanobody by Ablynx) is a peptide chain of about 110 amino acids long, comprising one variable domain of a heavy-chain antibody, these are called VHH fragments. Like a whole antibody, it is able to bind selectively to a specific antigen. Single-domain antibodies allow a broad range of applications in biotechnical as well as therapeutic uses due to their small size, simple production and high affinity.

Synonyms : Rabbit Anti-Camelid Single-Domain-Antibody Monoclonal Secondary Antibody (Min X Ms, Rt, Rb, Ch, Gt, Hu)

For laboratory research use only. Direct human use, including taking orally and injection and clinical use are forbidden.

生产商: 南京金斯瑞生物科技有限公司 江苏省南京市江宁区科学园雍熙路28号

Manufacturer: Nanjing GenScript Biotech Co., Ltd. No. 28Yongxi Road, Jiangning District, Nanjing, Jiangsu, China